

A radiator that on no account entirely warms up is one of these concerns that appears small at the beginning, then keeps stealing alleviation. One room feels comfortable, the following feels cold in spite of how long the thermostat sits on "rather greater." Sometimes the trend is constant, like the downstairs bedrooms always lag at the back of. Other instances it's extra hectic, the warmth arrives late, or it is easy to sense the pipe run scorching but the panel stays stubbornly cool.

People as a rule call it "a blocked radiator," or they blame the boiler. Both suggestions could be suitable, yet choppy warmth could be a approach factor, not a unmarried appliance situation. A vitality flush is one of the crucial most advantageous methods to deal with flow troubles caused by sludge, magnetite, and debris in a central heating technique. When you've got bloodless spots, it might probably be the big difference between constant partial alleviation and a manner that truly behaves as designed.

Let's dialogue approximately what explanations cold radiators, what a continual flush does, while it allows and when it's the incorrect device, and find out how to opt even if you desire a boiler carrier, boiler restore, or a full gadget intervention. I'll also proportion the variety of genuine-global tests I make sooner than recommending a force flush, considering the "bloodless radiator" criticism has just a few normal lookalikes.

## **What "chilly spots" constantly mean in a heating system**

Cold spots on radiators hardly ever come from the boiler just running out of electricity. Most boilers modulate, and they may still convey scorching pass water even if move is poor. When a radiator stays cold although others warm up, the conventional thread is that warm water isn't always attending to it in the right volume, at the appropriate time, or at the good pace.

There are a number of usual motives:

Sludge and debris can accumulate inside of radiators and inside the pipework. Older systems, chiefly people who have obvious minimum preservation, are greater prone. Over time, the debris settles in places where drift slows down, like at pipe elbows, radiator bottoms, and areas that see much less move. That reduces warmth switch and might also create partial blockages.

Trapped air is a further prevalent wrongdoer. Air doesn't forever behave like a fresh bubble which you can see. It can sit in upper aspects of pipework, or it'll form micro pockets that shop circulation uneven. You would possibly bleed a radiator and get a few sputtering water, then it improves in brief and returns later.

A misguided move part can even mimic a "sludge" hardship. If the pump is vulnerable, if the approach has an mistaken stability, or if there's an thing with valves, which you could end up with some radiators getting satisfactory waft and others not.

Then there's the "plumbing trouble" perspective. A poorly put in radiator, an flawed valve choice, a pipe run with restrictive fittings, or perhaps an installation blunders from earlier work can stay away from complete performance even when the boiler itself is healthful.

When you pay attention "bloodless spots," the center of it truly is invariably the equal query: is the formula flowing top, and is warmth move happening wherein it should always?

## **How a chronic flush simply fixes asymmetric heat**

A vigour flush is not very just a better drain and refill. It's a controlled system that circulates cleansing fluid by means of the heating device due to a prime-velocity pump, frequently with agitation. The aim is to dislodge and flow sludge, magnetite, and other deposits that average flushing can go away in the back of.

The "persistent" half concerns. In a whole lot of systems, sludge is sticky and layered. Water on my own can take away loose debris, but it struggles to interrupt down settled layers interior radiators. A chronic flush can guide scour the internal surfaces of radiators and pipework so the particles returns to suspension and gets carried out simply by filtration.

There's additionally a pragmatic element: you're no longer simply cleansing the seen radiators. Cold spots in general sit downstream of confined go with the flow paths. Even if the radiator you understand is the one staying cool, the real restriction would be in addition to come back within the components the place debris has equipped up. A continual flush aims the move route as a complete.

A magnificent operator doesn't deal with it like a single common task. They investigate the formula format and the warning signs, manage the exact connections and flushing technique, display the outcome, and in basic terms then determine even if the cleansing performed what's crucial.

## **Before you rush to vitality flush, verify the basics**

I've visible potential flushes prompt too rapidly, quite when any person has best bled one radiator or felt cold pipes and assumed the worst. Sometimes the trigger is a specific thing simpler and less disruptive, and from time to time it's as a matter of fact a safeguard or boiler efficiency challenge that wants attention first.

Start with the light observations. With the heating on, experience the movement pipe to the cold radiator and compare it to the return. If the drift is warm however the radiator panel is bloodless, that features toward loss of positive warmth switch contained in the radiator or limited drift via it. If the two pass and go back are cooler than anticipated, you can also have an isolation valve issue, balancing situation, or broader movement fault.

Check for air. If the radiator is gurgling, if the temperature behaves like a not on time reaction, or once you've had to bleed it often, trapped air may also be a part of the story. Air also can be presented after past plumbing work.

Look at your boiler settings and components behaviour. If the boiler cycles briskly, or whenever you're seeing faults and boiler breakdown indicators, you don't favor to ignore that. A boiler carrier or boiler repair could also be considered necessary irrespective of flushing plans, truly if the boiler is running inefficiently, wasting warmth, or suffering with ignition and management.

This concerns on the grounds that the resolution isn't most effective "do I flush?" It's also "is flushing the correct subsequent step, and are we fixing the underlying motive cold spots retain occurring?"

## **When cold radiators factor closer to sludge**

Sludge is the traditional reason behind many choppy warmness difficulties, and there are a few patterns that maintain displaying up in truly properties.

If a radiator is chilly at the high yet warm at the underside, air is a probable suspect. If the radiator feels cooler across the finished surface although the pipework feeding it's miles scorching, you in general suspect a restrict contained in the radiator. When the hindrance is regular across the comparable radiators every wintry weather, sludge and long-term accumulation are more likely than random trapped air.

Older strategies with cast iron substances or long pipe runs often strengthen magnetite deposits that hang to inner surfaces. This can slowly limit the constructive diameter of pipework, raising resistance and cutting back waft. Even if merely one radiator is visibly affected, the machine dynamics are altered.

Also be aware of what comes out. If you're ever present all over draining after a flush, you possibly can become aware of discolouration, darkish particles, or "sludge" visual appeal. Different heating fluids and components histories can swap what you spot, yet consistently dirty discharge helps the sludge speculation.

## **When trapped air is the genuine culprit**

Air disorders may well be persuasive considering the fact that they could glance exact to sludge first and foremost look. A radiator that warms overdue, or only after dissimilar cycles, should be air. If you will have micro air wallet, they'll transfer round, so the cold spot might shift over the years.

Signs that lean closer to air encompass a radiator that has been "constant" by way of bleeding however then returns, or radiators better up the formulation that continue to be cussed. Also, if you've had up to date plumbing paintings, radiator elimination, or leak maintenance, air ingress will become more believable.

A power flush can do away with sludge and can additionally shift a few air-connected waft disorders, however if air is the basic cause, you'll be able to get enhanced results from ideal venting and manner rebalancing. Sometimes either sludge and air are present, and that's the place the job will become extra nuanced.

## **A basic diagnostic mindset I use on site**

I don't need to wager in the summary. The such a lot fabulous assistance comes from the equipment itself, no longer from assumptions.

First, I compare radiator temperatures throughout rooms with the heating running long enough to attain stable stipulations. Then I test pipe runs and valve positions. A TRV set too low on one radiator, a sticky or 1/2-closed valve, or a partially isolated radiator can create a cold spot that seems like a stream situation.

Next, I seek for history. Did the estate have a boiler breakdown recently? Was there a boiler restoration involving the heating circuit? Was there ever a service the place the clear out were given unnoticed? Sometimes a left out strainer or a failed approach portion is the cause particles is construction up.

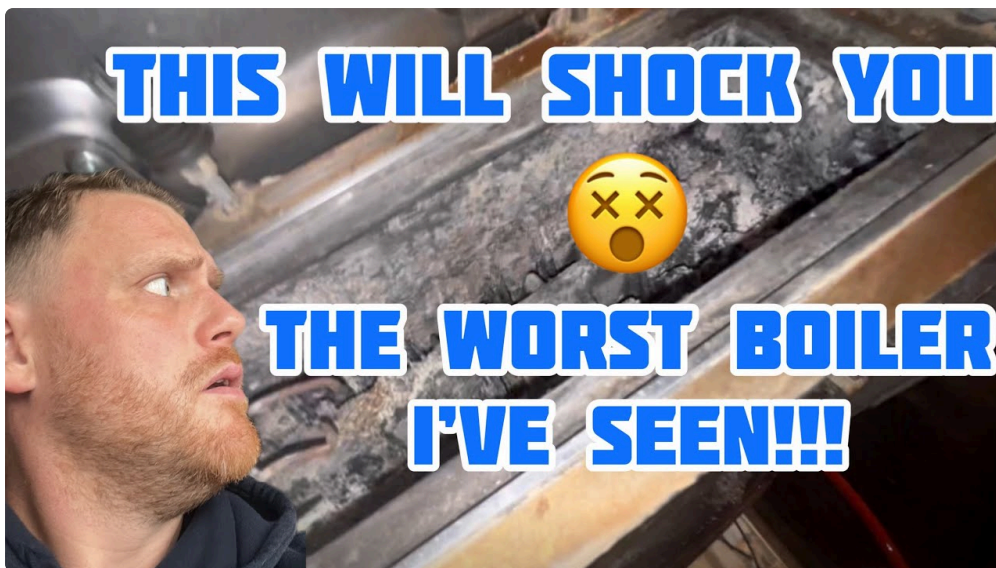
Then I verify for circulate functionality. If the pump is behaving poorly or the components has insufficient power or growth, you are able to get uneven heat inspite of "clean" water.

Finally, I trust regardless of whether a vigour flush suits the menace and disruption stage. It's invasive when put next to bleeding and balancing, so I attempt to be positive that cleaning will address the foundation motive.

## **What a strength flush activity broadly speaking involves**

Every installer has their very own system, however the basics are regular. A technician isolates the heating circuit, connects a flushing rig to the device, and circulates a cleaning agent such as the high-pace go with the flow. The particles is dislodged and carried to a filtration unit or seize system.

A lot of the achievement of a vigour flush comes down to manipulate and tracking. Cleaning too gently does now not cast off settled sludge. Cleaning too aggressively without expertise gadget constraints can fan the flames of debris that then clogs filters or damages add-ons. A reliable process uses the correct chemical substances, the appropriate flow development, and the perfect safety precautions.



After flushing, the device is entirely rinsed to dispose of cleaning fluid and suspended particles. Only then do they refill and treat the method with an inhibitor perfect to the boiler and formulation classification. This is where boiler coverage subjects, and it's also in which a lack of accurate observe-up can flip a "repair" into any other challenge later.

If your target is to solve choppy radiator warmness, the post-flush components circumstance is as appropriate because the flush itself.

## **The alternate-off: what you gain, and what can go wrong**

A pressure flush might possibly be transformative, but it's not magic. It's more beneficial concept of as a special intervention with actual consequences.

The upside is plain: enhanced flow and heat switch. Radiators that had been in the past underperforming would possibly hot up frivolously. Pipes can think more constantly sizzling. The device can changed into much less noisy, and boiler biking behaviour also can raise considering the boiler is no longer scuffling with poor float.

The draw back is disruption and danger. Some methods have delicate add-ons, and agitation can dislodge debris that then attacks a weak joint. That approach a power flush can monitor a leak that become already there yet masked via low circulation or confined circulation of sludge.

Also, now not each and every bloodless radiator dilemma is sludge. If the foundation purpose is a misguided valve, a steadiness hassle, or a habitual air ingress point, flushing can even fortify some warning signs when no longer solving the top lead to. In the ones circumstances you may nevertheless desire an adjustment plan, potentially concerning radiator valves, air venting, or other plumbing interventions.

That's why I like diagnosing first and making plans 2nd, not any other means around. You choose the blank that suits the trouble.

## **How to decide if you need a vigour flush or radiator changes**

Some cold spots are so intense, or the radiator is so degraded, that cleaning is not going to repair overall performance. Others are gentle and will also be resolved because of flushing and rebalancing.

If a radiator is physically corroded, has internal sections that are damaged, or has repeated things after past cleaning, replacement turns into extra check-positive. It additionally reduces the danger of particles reappearing on account of outdated inner scaling.

If the chilly spot is component of a broader development across assorted radiators, that tends to favour formulation cleaning. If solely one radiator is intricate and every part else behaves continuously, it may possibly be that detailed radiator's internal limit or valve trouble. Sometimes the repair is as straight forward as checking the valve, however often it's nevertheless sludge trapped within that unit.

If you're puzzling over pressure flush plus maintenance, take into account no matter if the boiler and safe practices platforms want consciousness at the comparable time. A Gas Safety Check, Gas safety certificate paperwork, or commonly used servicing is also crucial depending in your difficulty and landlord standards. It's not that flushing replaces safe practices exams, it's that after the heating circuit is being addressed, it's a tight moment to handle compliance and upkeep accurately.

## **Common errors that waste time and money**

There are just a few tactics this concern will get mishandled time and again.

One is "bleed basically" troubleshooting. If you bleed constantly and the problem returns in a timely fashion, you're oftentimes chasing air with no addressing sludge. Bleeding can assistance, but it isn't necessarily a healing.

Another is ignoring boiler provider desires. If the boiler hasn't had focus in a long time, a heating efficiency hassle is likely to be in part mechanical or regulate relevant. In that case, a plumber will be cleaning a circuit at the same time the boiler nevertheless struggles with efficiency and safe operation.

A 1/3 mistake is treating a drive flush as non-obligatory if radiators are bloodless. Cold radiators are usually the symptom, now not the trigger. If you don't tackle the circulate resistance, you come to be with seasonal frustration and rising gas expenditures.

Finally, there's the drawback of negative procedure refilling and inhibitor dosing after flushing. The formula necessities insurance plan against corrosion. If that step is skipped or weak, you can still end up correct lower back where you began, every so often sooner than you predict.

## **A lifelike "what to anticipate" timeline**

In so much conventional domestic jobs, a potential flush takes longer than a hassle-free radiator bleed or boiler restore because it includes setup, flushing, monitoring, filtration, rinsing, and then refill and chemical medical care. If the assets has varied radiators or a troublesome format, the time can expand.

The day of the persistent flush is as a rule the busiest. The system shall be out of motion, and the installer will recurrently explain what they're doing at each stage and what they observe within the discharge. Homeowners basically choose to realize even if the flush is "running." You could be capable of see facts like alterations in discharge shade and the effectiveness of filtration through the years.

After the flush, it is easy to desire a quick adjustment era. Some strategies settle down after refilling, but you can still want venting and tests as air rises after water circulate resumes.

If the warning signs had been attributable to sludge, you pretty much see advantage truly quickly as soon as heat is strolling and the components stabilises. If air changed into a huge contributor, it's possible you'll see sluggish benefit as vents clear, yet you could additionally count on the installer to cope with the cause air is offered.

## **Where boiler breakdown and boiler provider more healthy into the picture**

Cold spots can overlap with boiler provider problems in a way that creates confusion. For instance, if the boiler has a fault history, it's possible you'll have either a movement hassle and a boiler overall performance challenge. A boiler will have issues with ignition, warm change potency, pump keep an eye on, or scaling. Any of those can have an impact on how frivolously the system heats.

If you're seeing widely used faults, force drops, abnormal noises, or inconsistent heating response across zones, it's reasonable to get the boiler checked. A boiler carrier will never be handiest approximately safety and compliance, it's also about verifying that the boiler is working within wide-spread parameters.

That talked about, servicing on my own won't transparent sludge from a stream course. A boiler is additionally serviced desirable and nonetheless fight to give even warm if the procedure is limited.

In the true world, the most appropriate result turn up while equally angles are addressed. Fix the boiler if it's unwell, and fasten the heating circuit if it's dirty or air-certain. That reduces repeat callouts and seasonal frustration.

## **Getting the forms and safeguard edge right**

If you are a landlord otherwise you arrange a belongings with gas appliances, possible probably need to stay up with Gas Safety Check requisites and Gas safe practices certificate documentation. A chronic flush is set the heating circuit, now not approximately gasoline combustion safety. However, it commonly takes situation along boiler inspection or paintings on areas of the machine that connect with gas appliances.

If you're booking a task, be certain that you be mindful what's being lined. Some businesses will pair radiator and plumbing paintings with ultimate Gas Safety Check visits, totally in which a boiler is being serviced or repaired as section of the equal plan. If you may have LPG home equipment, the identical precept applies, basically the context changes.

This also is wherein Gas security certificates paperwork concerns. Even in the event that your most important symptom is chilly radiators, you don't would like to go away compliance to chance.

## **Power flush for particular components models: what changes**

Not every principal heating equipment is same, and the system and chance evaluation can alternate relying on how the equipment is constructed.

If you've got you have got trendy sealed techniques with properly strain and functioning enlargement vessels, the safe practices profile is traditionally undemanding. If you've gotten older procedures, probable with unique pipe supplies or added components through the years, debris behaviour could be less predictable. If the manner carries microbore pipework or older radiators that have obvious years of accumulation, planning the flush becomes greater fundamental.

If the property has underfloor heating or zones, technicians might adapt their attitude so that they don't create new subject matters in constituents of the components which might be much less tolerant of agitation.

Even in buildings in which the "cold spot" is a effortless radiator, a fair installer will nonetheless ponder what's going down across the complete equipment. Cold heat styles most of the time come from wherein the system slows down, and that will be in hidden sections of pipework.

## **Don't ignore the "why now?" question**

One of the questions I ask users is while the cold spots began and whether or not something changed simply until now it started. A lot of complications occur after a boiler restoration, after a plumbing leak, after radiator elimination for decoration, or after a heating pipe became disconnected and reconnected.

If a cold radiator started out soon after an interruption, air is much more likely. If the issue has been worsening over distinct seasons, sludge and corrosion are more likely.

If you're managing routine bloodless spots despite preceding bleeding and small maintenance, that's a effective hint that movement is still restricted. At that level, a energy flush will become less like a "take a look at it and spot" circulate and greater like a logical intervention.

## **If you run varied gas home equipment, plan the work sensibly**

Some houses have multiple gas equipment, like a boiler plus a gas fire or a fuel cooker. In a few families, there's additionally an ongoing repairs activities that entails Gas Fire Service or Gas Fire Installation and, once in a while, Gas Cooker Installation paintings. Those projects don't promptly repair chilly radiators, however they do change scheduling and get admission to.

If you're already reserving an engineer, it may be good to coordinate. For instance, if a boiler is being serviced or repaired by means of a boiler breakdown, that you could ask no matter if a heating equipment flush makes experience stylish on the approach situation. If you're putting in new appliances, verify the plumbing and pipework works are finished with out introducing air problems or compromising process balances.

In advertisement environments, the same coordination applies, no matter if the surroundings is abnormal. I've visible properties wherein a "Burger van gasoline" setup or different catering gas installations percentage a much wider website online renovation plan. The secret's consistently the identical: avert gas security assessments separate and proper, and don't deal with heating circuit cleaning as an afterthought.

## **A short listing to tell your engineer what to seem for**

You don't must be a plumbing knowledgeable to present successful wisdom. The more true your observations, the easier it really is to judge among bleeding, balancing, boiler restoration, radiator work, or a capability flush.

Consider noting such things as:

- Which radiators are bloodless, and no matter if it's steady room to room
- Whether the circulate pipe is hot whereas the radiator itself stays cool
- Any recent boiler breakdown, boiler carrier, or plumbing paintings within the final yr

- Whether bleeding is helping, and if the subject returns immediately
- Any boiler error codes, exceptional noises, or stress adjustments

That set of notes by myself can minimize down the guesswork.

## **What to ask earlier booking a vigorous flush**

You can defend yourself from a negative area by using asking clean questions. A strong technician will likely be in a position to explain the technique and the reasoning without hand-waving.

For occasion, ask how they are going to investigate no matter if sludge is latest formerly establishing. Ask what filtration setup they use and regardless of whether they visual display unit discharge. Ask what they can do after the flush to stock up and treat the machine with the exact inhibitor, and whether they plan for venting and submit-assessments.

Also ask approximately manner safeguards. If you will have precise aspects, older radiators, or valves which were complicated, tell them prematurely. That's the place sense reveals.

If the activity comprises boiler service or boiler repair, ask regardless of whether the Gas Safety Check and Gas protection certificate forms can be handled thoroughly if that applies to your property. Many consumers care so much about remedy, however an engineer who covers equally performance and compliance tends to do the task competently.

## **Edge cases: whilst continual flushing might be the wrong move**

There are eventualities where potential flush is unlikely to clear up the underlying quandary.

If a cold radiator is brought on by a stuck or flawed valve surroundings, flushing gained't restoration it. The radiator may nonetheless not get the proper proportion of go with the flow. You ought to put money into cleaning and nonetheless turn out to be cold within the comparable room.

If the issue is air trapped because of the a erroneous vent, wrong procedure filling, or a continual leak of air into the machine, the main issue can return after any flush. In that case, the truly medication is correcting the venting and addressing the air entry path.

If pipework has been incorrectly hooked up with extreme restrict, a flush may well move some debris yet can not greatest a layout mistake.

If you could have a weak pump or electrical problem affecting circulation, cleansing alone won't overcome low movement. A drive flush can typically make the technique freer to circulate, however if stream hardware is underperforming, you still need to restoration that.

This is why the 1st hour of an research matters a lot. The just right collection is absolutely not always "flush first." Sometimes the neatest trail is to exact valves, balancing, air vents, pump performance, and then come to a decision no matter if extra cleaning is needed.

## **Aftercare: what occurs once the radiators get started behaving again**

Once the formulation is wiped clean and refilled, you wish it to stay healthful. That means riding proper inhibitor, affirming perfect force, and staring at how the machine behaves over the subsequent days.

You have to also be expecting a few equipment adjustment. Air can still upward thrust after refilling. That would possibly mean a apply-up venting motion, quite if the procedure has excessive facets.

If you notice a radiator returning to cold right now, don't ignore it. That can point out ongoing air things, a valve fault, or a circulation resistance that wasn't entirely resolved. In many circumstances, repeat chilly spots after a sparkling flush ability the incorrect root rationale turned into special or the system wishes similarly correction.

For peace of brain, it's additionally low cost to keep an eye fixed on boiler overall performance. If you had points that appeared like boiler breakdown, and the quandary improves after solving the heating circuit, that's a very good signal. If boiler faults persist, you'll be able to desire a appropriate boiler fix plan along the equipment paintings.

## **What approximately setting up a brand new boiler as a replacement?**

Some house owners think boiler installing after they face repeated heating difficulties. A new boiler can make stronger efficiency and reliability, however it received't exchange the need for a easy heating circuit.

If your manner has sludge, [Aircon Essex](#) a brand new boiler can nevertheless be afflicted by reduced effectivity and is usually at bigger danger of scaling or operational troubles. Replacing the boiler devoid of addressing the heating technique situation is like purchasing a new engine for a motor vehicle with clogged gas lines.

However, there are situations in which boiler replacement makes sense along flushing or after perfect cleaning, especially while the outdated boiler is coming near near the finish of its provider existence. The suitable determination relies upon on age, situation, fix historical past, and whether the heating circuit things are fixable with no compromising long-term functionality.

## **When consolation returns, it's noticeable**

One component human beings don't normally are expecting is how simply you really feel the difference once movement improves. Cold rooms don't simply warm up a little bit, they commonly warm up accurately and more always. You also tend to understand that the gadget behaves extra predictably, with less "wait and wish" heating.

The most suitable component of resolving cold spots is just not only convenience. It's also diminished strain. You forestall walking the boiler more difficult than it may still be, you discontinue juggling thermostats, and also you prevent aggravating whether or not a better bloodless snap will deliver an alternate around of bleeding and troubleshooting.

A drive flush is a extreme step, yet while it's selected for the exact cause, it may possibly be the so much direct course from asymmetric warm to continuous comfort.

## **Final emotions on vigor flushing asymmetric radiator heat**

Cold spots are as a rule a symptom of circulate and cleanliness disorders within the significant heating procedure. A potential flush can transparent the sludge and particles that restrict movement paths, support heat move, and repair more even radiator temperatures. It's also a system that wants judgement, seeing that not each chilly radiator trouble is sludge, and no longer each system tolerates agitation the identical manner.

If you're dealing with regular cold rooms, hot move pipes paired with cool radiator panels, or repeated problems that return after bleeding, it's value discussing vitality flushing as a part of a much wider plan that involves correct formulation refilling and inhibitor cure. If your boiler may be due for a boiler carrier, or if there are signs and symptoms of boiler restore necessities, handle those along the heating circuit, and determine Gas safe practices certificate tasks and Gas Safety Check visits are handled where suitable.

Your heating process must always ship convenience flippantly. When it doesn't, the repair is hardly ever a unmarried radiator bleed. It's repeatedly the movement, the cleanliness, and the means the gadget has been maintained, and that's precisely where a well-executed energy flush earns its area.