

Deciding how to address your web design in Essex isn't just a budget query. It's a time administration query, a control query, and in some way a query of how you would like your company to be represented online. I've spent years aiding nearby organizations navigate this collection, and I've discovered there are rough truths at the back of the romance of a sparkly new web site and the relief of a trusted in-apartment team. The right route for one commercial enterprise shall be the wrong direction for another, and the panorama round you is endlessly moving. Essex, with towns like Chelmsford, Colchester, Southend, Basildon, and Brentwood, blends small-company grit with a growing appetite for seasoned web presence. The result is a marketplace the place the two in-area groups and specialized web design businesses can do stellar work — and wherein the choice hinges on proper healthy, not buzzwords.

In this text I'll stroll you simply by the reasonable considerations, the alternate-offs, and the proper-global constraints I've spoke of whereas operating with Essex shoppers. You'll locate grounded instructions, a framework for selection making, and the form of nuance that a swift online calculator almost always misses.

The center tension: management versus focus

When you build a workforce in-dwelling, you obtain direct control over the manner. You can instantly redirect priorities, regulate a coloration tweak, or revise a replica block without awaiting an external signal-off. This direct manage should be would be could very well be a effectual motivator, principally in fast-shifting industries the place a homepage banner wishes updating beforehand a regional crusade launches. But keep an eye on comes with bills. People, payroll, utility licenses, training, and the daily friction of collaboration can slow down your pace. An in-dwelling net workforce is a residing device that must be cared for, or it is going to lose its part.

A web design organization in Essex brings a varied reasonable leverage. Agencies exist to clear up frustrating disorders effectually, with a bench of authorities who can step in for learn, UX design, front-end growth, accessibility, and search engine optimization technique. Agencies bring a assignment subject that mainly translates into smoother handoffs, clearer timelines, and an extra objective eye in your commercial dreams. The trade-off is often times distance and a layer of communication you don't get with an interior workforce. You won't have the same daily familiarity along with your personnel and techniques, and there is an interval of onboarding and alignment that each external partner requires.

This is not a binary collection. It's a spectrum. Some agencies in Essex present a hybrid brand: an in-home workforce that works intently with a selective enterprise for specialised sprints corresponding to widespread migrations, search engine optimization audits, or complicated e-trade builds. Others function fully on a retainer with a service provider, providing ongoing layout and pattern aid. And a few organisations discover a most suitable suit with a small, really good in-home workforce that handles every day updates even as outsourcing strategic tasks to a depended on company associate. The trick is to map your desires to that spectrum and commit to an arrangement that is still bendy as your trade evolves.

What you really want from an internet layout solution

Before you compare payment tags, title a winner, or opt for a desired geography, pause to articulate your possess goals. A clear aim supports you overview even if you ought to construct in-condo, partner with an supplier, or pursue a hybrid brand.

- Growth pace. If your fastest course to extra inquiries, signups, or income hinges on immediate experiments and a continuous cadence of tests, a partner who can abruptly deploy A/B checks, accessibility enhancements, and CRO instructional materials is likely to be precious.

- Brand consistency. A primary design field that preserves typography, colour, voice, and layout throughout diverse domain names and property is more straightforward to retain with a small, cohesive workforce or a trusted corporation that is aware your emblem deeply.
- Technical steadiness. A strong CMS, professional hosting, strict functionality budgets, and strong security practices require both an in-dwelling potential or a associate with shown trip for your tech stack.
- Resource availability. If you're already stretched skinny, outsourcing layout and trend work can free time for middle trade initiatives. If you've got you have got bandwidth and appetite for ongoing discovering, an in-house team can change into a driver of continual benefit.
- Cost format. Agencies usually present task-based mostly or retainer pricing that scales with scope. An in-home staff seems to be as ongoing payroll plus application rates. Look past sticker expense to general value of ownership over a 12 to 24 month horizon.

### The useful resolution framework

To convert those thoughts into motion, you need a concrete framework you'll be able to observe to proper tasks. Here is a means to frame the resolution with out turning it into an infinite spreadsheet train.

- Start with a campus map of your needs. List the middle digital expertise your business requires over the following two years. Break them into subject matters like site functionality, content, e-commerce, and accessibility. For every one theme, estimate the level of ongoing consciousness it would require.
- Assess your modern-day capacity. Do you already have folks that can own layout, pattern, content material, and analytics? If not, is it attainable to lease a few gurus or to collaborate with an employer that may source these talents soon?
- Define a luck profile for each one direction. An in-space resolution must always purpose for a predictable beginning rhythm, steady quotes, and a tradition of experimentation. An agency resolution could target for clear milestones, obvious conversation, and measurable effect aligned together with your trade ambitions.
- Plan the ramp. If you favor an organization, make certain the onboarding depth and the primary 90 days. If you settle upon in-home, map recruiting, schooling, and software procurement. Either trail benefits from a pilot segment in which you check collaboration, size, and governance.
- Build governance. Decide who symptoms off on design judgements, who owns content material, who handles defense, and who manages overall performance. Governance scales up as initiatives develop more complex, and it enables steer clear of waft.

### The check of a determination that feels cheap

Price is also a deceptive compass. It's tempting to chase a shrink prematurely cost for simplicity, but the factual expense tends to disclose itself within the months that observe.

- In-area expense traps. Hiring one or two designers or builders will probably be inexpensive at first, but you'll quickly face onboarding expenditures, benefits, education, tool licenses, and the risk of stale expertise if human beings rotate off the task. A small workforce would possibly want a supervisor, a QA course of, and a aid plan for after-hours complications.
- Agency can charge traps. A low preliminary quote can entice finances-wakeful shoppers, but the scope creep is genuine once stakeholders have an understanding of how a great deal paintings goes into discovery, technique, and ongoing optimization. Projects can waft past initial scope if the governance is susceptible or if the business enterprise is juggling too many customers immediately.

A practical way to frame bills is to evaluate no longer just the charge tag, however the complete lifecycle. Ask for a complete payment of ownership over two years for both paths. Compare:

- People bills or month-to-month retainers
- Tooling and software licenses
- Hosting and security
- Training and skills transfer
- Maintenance, updates, and long term migrations
- Opportunity expenditures from delayed characteristic delivery

These numbers aren't only for the finance workforce. They assistance the comprehensive management workforce recognize what the site will be like in 24 months, no longer simply at launch. They also disclose how so much you are going to rely upon exterior partners to shop momentum going and what sort of you could want to spend money on in-residence strength once you pick that course.

### Choosing a spouse in Essex

Essex has a shiny environment of cyber web layout enterprises and talented freelancers. What makes a regional associate compelling isn't simply proximity; it's a shared realizing of local industry realities, the regulatory atmosphere, and the simple constraints of neighborhood seek functionality. A exceptional Essex partner will deliver not purely layout chops and progress ability yet also a pragmatic feel of easy methods to function in a marketplace in which purchasers magnitude speed, reliability, and clean communication.

When you compare prospective partners, examine those reasonable indicators:

- A music listing with firms like yours. Look for case stories or testimonials from local SMEs or comparable sectors. The relevance of the area adventure commonly translates into sharper downside framing and fewer surprises in the time of supply.
- A clean collaboration model. You want to work out a outlined task for discovery, layout critiques, construction sprints, checking out, and release. A dull but considered necessary detail is how you possibly can measure luck and what achievement appears like at every milestone.
- Accessibility and efficiency subject. In the British industry, customers be expecting a website that plenty promptly and is simple to exploit on mobilephone. The corporation should still display an manner to functionality budgets, accessibility standards, and ongoing monitoring.
- Cultural match. The partnership will contain wide-spread conversation, comments cycles, and potentially a shared workspace or on daily basis standups. The good cultural chemistry speeds issues up and reduces friction.
- Longevity and publish-release toughen. A credible companion will offer a renovation plan, content updates, defense patches, and a method for iteration past the preliminary construct.

### In-space wins and pitfalls

If you select to cultivate an inner power, you're signing up for a self-discipline that rewards method and possession. A small, centered team can act right now and execute with a consistent voice, that's worthy for ongoing campaigns and seasonal promotions. You can align content technique with product updates, adjust touchdown pages at the fly in response to analytics, and take care of a unmarried aspect of certainty on your emblem.

The so much favourite wins come from:

- A unified backlog that aligns product, marketing, and layout ambitions.
- Faster generation cycles as soon as the group is in rhythm.
- A clearer channel for remarks from revenues and client care to product and design.
- Consistent branding and tone throughout all touchpoints.

But there are pitfalls to be conscious about:

- The danger of capacity waft. Without dedicated gaining knowledge of time, your crew's expertise can stagnate, pretty in a fast-exchanging house like cyber web design and virtual marketing.
- Burnout and turnover. Small groups in busy markets face excessive drive. It's crucial to hold workload conceivable and to invest in respectable development.
- Maintenance debt. Without a effective exterior associate, you possibly can emerge as with a website that looks accurate however lacks robust analytics, accessibility refinements, or scalable structure.
- Siloed selection making. If product, advertising and marketing, and IT do now not collaborate closely, possible construct gains that don't translate into truly importance for customers.

Agency advantages and caveats

Engaging a Website Design Agency Essex elegant partner can release a numerous scale and a greater specialised capability set. Agencies carry vast event across industries, enabling them to spot styles and reuse triumphant ideas as opposed to reinventing the wheel. They're in the main able to address intricate migrations, large content material updates, and multi-channel campaigns with a coordinated strategy.

What tends to paintings smartly with an enterprise:

- A clean discovery part that results in a solid temporary, a defined scope, and a pragmatic timeline.
- A staged start plan with concrete milestones and agreed fulfillment metrics.
- Regular check-ins that continue stakeholders aligned and enable for direction corrections without drama.
- A robust QA and accessibility checking out regime to make sure that the web page performs well for all clients.

Common agency caveats incorporate:

- The hazard of misalignment if the transient is vague or ambiguous. Agencies thrive on distinct direction; imprecise desires invite scope creep.
- The option of slower determination cycles while outside signal-offs are required. Establish a streamlined governance method to avert momentum.
- Dependence on the employer for ongoing upgrades. If you choose sluggish internal ability improvement, sustain a plan for abilities switch and documentation.

A simple route for Essex companies with blended needs

Many Essex enterprises merit from a hybrid approach. This most likely seems like a center in-space workforce that handles day by day updates, content, and swift turnarounds, plus a trusted corporation spouse who takes care of strategic redesigns, super characteristic additions, and challenging integrations. The hybrid form can blend the top-rated of both worlds:

- You conserve agility for routine ameliorations using in-apartment possession.
- You reap get admission to to external skills for prime-stakes projects and specialized advantage.

- You guard a channel for objective audits and sparking views that an internal crew can savour.

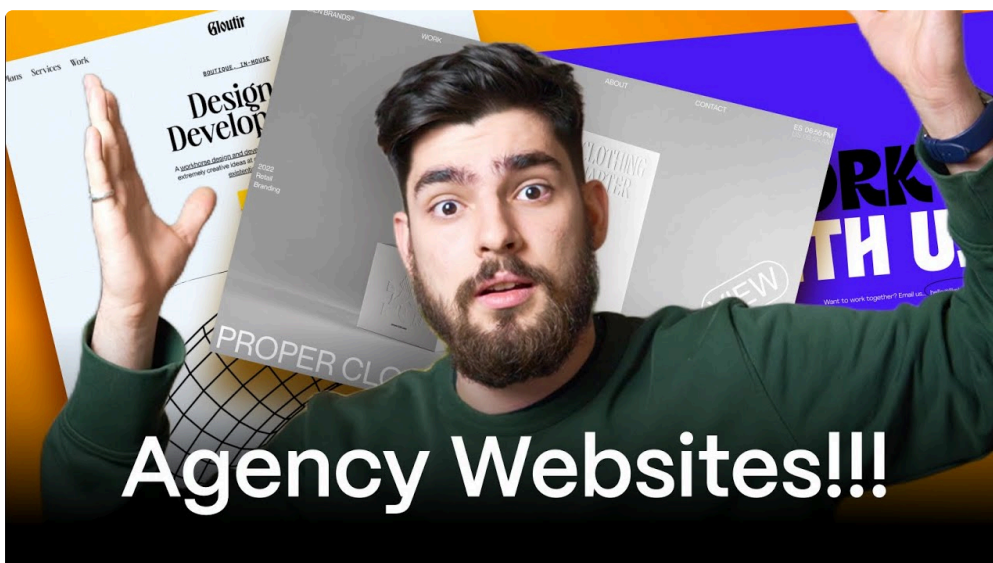
A few tactical steps to put into effect a hybrid strategy efficiently:

- Establish a clean RACI matrix. Who is Responsible, Accountable, Consulted, and Informed for layout judgements, content updates, and technical variations? A shared matrix prevents ambiguity and tames scope creep.
- Invest in potential switch. Schedule quarterly workshops in which the supplier walks your staff simply by new patterns, accessibility exams, and performance optimizations. Capture this in a residing design system and documentation hub.
- Align governance with business metrics. Tie design judgements to measurable outcome along with conversion price, time on page, and cargo occasions. Make those dashboards obvious to either aspects of the partnership.
- Create a disciplined dash cadence. Even in case you very own the ongoing updates, use a sprint-founded attitude for prime differences. A predictable rhythm reduces firefighting and maintains progress obvious.

Case reviews from the Essex scene

I've labored with a handful of Essex-based mostly organizations that illustrate how these preferences play out in perform. One corporation begun with an in-dwelling team of two and shriveled a nearby company for an incredible web site migration. The migration introduced in six weeks, with a forty p.c. relief in web page load instances and a fifteen p.c raise in conversion for a key service web page. The in-space team then migrated to a maintenance mode, handling content updates and minor tweaks, at the same time as the corporation supported ongoing optimization sprints each and every zone. The outcomes become a solid platform with a clear improvement path, no longer a one-off rebuild accompanied by way of forget about.

Another patron, a family-owned shop in a industry the city, all started with an organization-led rebrand and a domain refresh. The mission added a extra polished buyer journey, multiplied accessibility, and more advantageous search visibility. After launch, the save shifted to a hybrid kind: the enterprise remained chargeable for significant improvements and technical audits, although the inner staff taken care of day by day content and banner checking out. The influence turned into a more consistent company voice, sooner time to marketplace for promotions, and a measurable uplift in on-line inquiries.



In a extraordinary scenario, a service-primarily based commercial in Colchester leaned into a fully in-space attitude for the web content and content material approach. They developed a small interior team that

owned the CMS, content material planning, and SEO optimization. The consequence changed into nimble experimentation and a reliable alignment between advertising and marketing objectives and site overall performance. However, after eighteen months, they learned they considered necessary external potential to scale past their local area. They then formed a partnership with a neighborhood employer for international enlargement work, bringing inside the helpful potential without sacrificing the in-area foundation.

The human thing: crew dynamics and shopper relationships

No choice approximately in-apartment as opposed to service provider is whole without acknowledging the folks in touch. The maximum a success projects I even have noticed in Essex share about a customary human trends:

- Clear communicate. The correct teams over-be in contact early and primarily. They agenda universal reviews, share growth transparently, and retain stakeholders within the loop approximately disadvantages and change-offs.
- Mutual recognize for technology. Agencies recognize the data of a patron's product and industry; interior groups recognize the external companion's experience with similar constraints and disciplines.
- Pragmatic prioritization. They agree on what topics maximum to commercial enterprise objectives and are trustworthy about what should be would be added inside time and finances.
- A lifestyle of studying. Both sides put money into researching from every single task, development a repository of templates, patterns, and guidelines that speed up destiny paintings.
- A shared sense of possession. Projects be successful while equally facets experience a feel of duty for outcome other than simply supply.

What to invite whilst talking to a companion in Essex

If you are leaning toward working with a Website Design Agency Essex, right here are purposeful questions to guide your conversations. You need clean, actionable answers that reflect a mature mission field in place of a sleek pitch.

- How do you shape discovery, and what does good fortune look like within the discovery segment?
- Can you share a up to date assignment that involved a technical undertaking equivalent to ours, and what used to be the influence?
- What is your process to accessibility and efficiency budgets, and how do you degree success over the years?
- How do you cope with content material technique and search engine marketing alignment all through a prime remodel or migration?
- What does collaboration seem like in follow, along with verbal exchange cadence, sign-off strategies, and documentation?
- What is your submit-release reinforce adaptation, and how do you care for ongoing optimization?

If you are development an in-area potential, some real looking questions still practice:

- What is the elementary talent set we want to lease for first, and the way can we recruit effortlessly?
- How can we structure practicing to hold qualifications contemporary in a quick-relocating space?
- What governance mechanisms make sure that our website stays coherent because it scales?
- How do we steadiness characteristic work with preservation responsibilities and content updates?
- What is the plan for expertise switch from any exterior companions we have interaction?

A observe on the Essex context

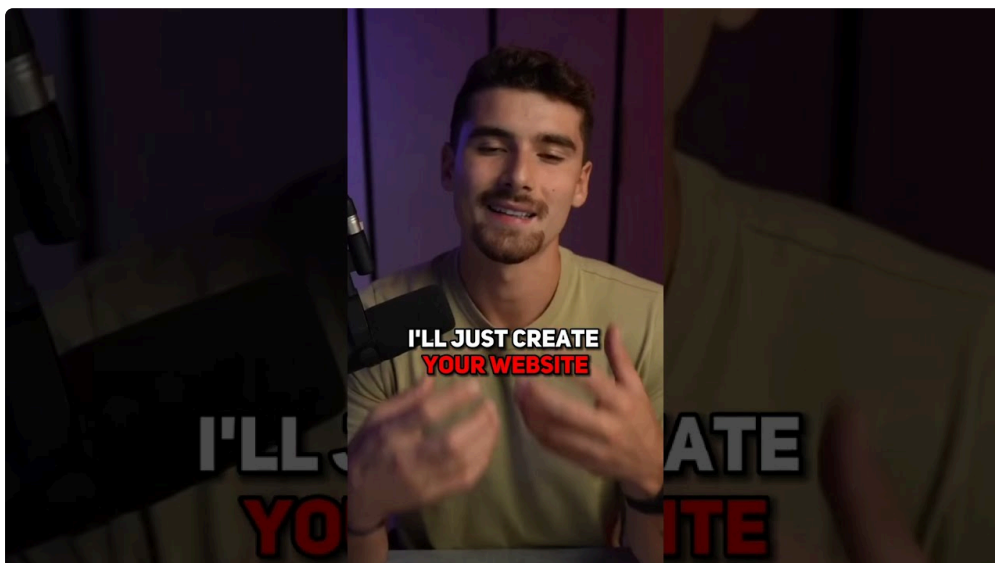
Essex is an area with a unique mix of custom and innovation. You have rural and coastal communities, thriving city centers, and a number SMEs that export amenities to the relaxation of the UK and beyond. The electronic maturity the following mainly reflects a realistic, value-conscious system. The purchaser ride tends to be uncomplicated, with functional expectations for velocity and reliability. A amazing internet layout approach during this market prioritizes readability, immediate wins, and a roadmap for sustainable increase. It is much less approximately chasing every new UI fad and extra approximately delivering a website that serves genuine users nicely as we speak although staying adaptable for tomorrow.

Realistic expectations for timelines and outcomes

If you sign with an supplier, a regular timeline for a mid-sized redesign would possibly look like this:

- Discovery and learn: two to four weeks, based on the depth of analytics review and stakeholder interviews.
- Design and prototyping: 4 to six weeks, with multiple rounds of criticism and governance stories.
- Development and trying out: 4 to 8 weeks for a strong release, together with accessibility and overall performance testing.
- Launch and preliminary optimization: two to 4 weeks of monitoring, with a plan for the first round of improvements.

With an in-home workforce, the cadence seems to be various. You'll seemingly movement in shorter sprints tied to content material updates, with an extended horizon for main differences. You'll want a tough content workflow, a clear launch calendar, and a plan for returned-finish repairs. The merit is fast generation at the content and messaging that may be rolled out with minimum external coordination. The risk is the knowledge waft in layout concord if there isn't a centralized method for governance and a living design language.



A personal advice based mostly on years of work on this region

If your target is stable development with an emphasis on company area and long-term scalability, a hybrid variety has a tendency to carry the strongest outcome for lots Essex groups. Start with a compact in-condominium capability for content, updates, and everyday optimization. Partner with a trusted supplier for strategic redesigns, not easy traits, and technical audits. Build a living layout device that sits on the heart of each groups, with a quarterly cadence of method evaluations, overall performance reporting, and

experience transfer periods. This way minimizes chance whereas maximizing researching and pace to industry.

If you are at a crossroads with no inside staff but, a phased frame of mind makes sense. Begin with an organisation-led undertaking that provides a clean, measurable benefit in core metrics. At the comparable time, invest in a small in-space skill that handles content and routine updates. Use the first six to one year to end up the fee of the hybrid form. If the numbers demonstrate a positive go back on investment, scale subsequently and refine the governance shape.

### The long view

Your web content is a dwelling asset, no longer a one-off venture. The Essex market rewards functional, reliable reports. A website online that quite a bit briefly, serves excellent know-how, and speaks with a constant voice will win consider and convert extra customers. The decision among in-dwelling and a Website Design Agency Essex associate is in the end a decision about how you want to steward that asset through the years. It is set whether or not you prefer a small, nimble community which will swivel as needs alternate, or a bigger, more really expert crew that will deal with bold programs with a disciplined mindset. In many situations, the best course sits inside the core, with a effectively-dependent hybrid association that leverages the strengths of either worlds although retaining the operation lean, adaptable, and centered on results.

### Two real looking takeaways to near this out

- Start with a design language that travels. Invest in a design process that captures typography, spacing, shade, ingredients, and copy kind. This single supply of reality helps both in-residence teams and firms dwell aligned, decreasing friction throughout the time of handoffs.
- Treat ongoing optimization as a quality undertaking. Your site will have to have a standing job for checking out techniques, inspecting knowledge, and publishing enhancements. The real worth comes not from a huge launch, however from a consistent circulation of considerate upgrades that push your metrics ahead.

As [Web Design Agency Essex](#) you ponder your strategies in Essex, needless to say that the finest decision isn't really the only that appears most striking on a slide deck. It's the attitude that lets your industry research turbo, give greater reliably, and grow with self belief. Whether you pass in-space, partner with a local enterprise, or undertake a hybrid mannequin, the successful components is clarity, governance, and a continuing focal point on outcomes possible measure and keep up.